

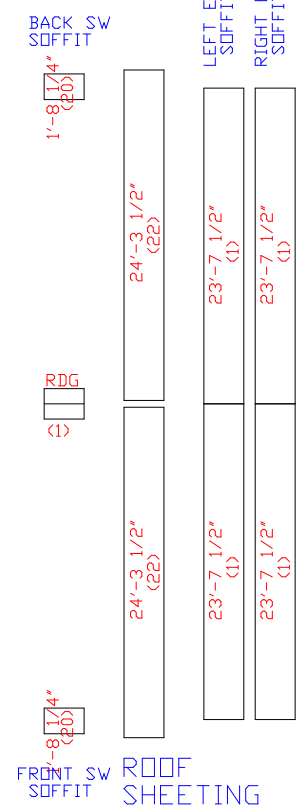
ROOF FRAMING PLAN

EXTENSION/CANOPY BOLTS ROOF PLAN				
MARK	QUAN	TYPE	DIA	LENGTH
EB-2	4	A325	5/8"	1 1/2"
EB-3	4	A325	5/8"	1 1/2"

TRIM TABLE ROOF PLAN		
ID MARK	LENGTH	DETAIL
RDG	10'-3"	TRIM 173
RDG	14'-3"	TRIM 173

MEMBER TABLE ROOF PLAN		
MARK	PART	LENGTH
EB-1	10FC063	3'-6 5/16"
EB-2	W10X12	2'-7 13/16"
EB-3	W10X12	2'-8 1/16"
EB-4	10FC063	3'-6 5/16"
P-1	10x25Z14	22'-7 1/2"
P-2	10x25Z14	22'-3 1/2"
P-3	10x25Z14	22'-7 1/2"
E-1	10ESL414	19'-2 1/2"
E-2	10ESL414	19'-7 1/2"
E-6	10ESL414	1'-8 1/2"
CB-2	CB0250	29'-0"
CB-3	CB0250	29'-1"

CONNECTION PLATES ROOF PLAN	
ID	MARK/PART
1	e1
2	76830X
3	e2
4	e3
5	e4
6	e5
7	e6



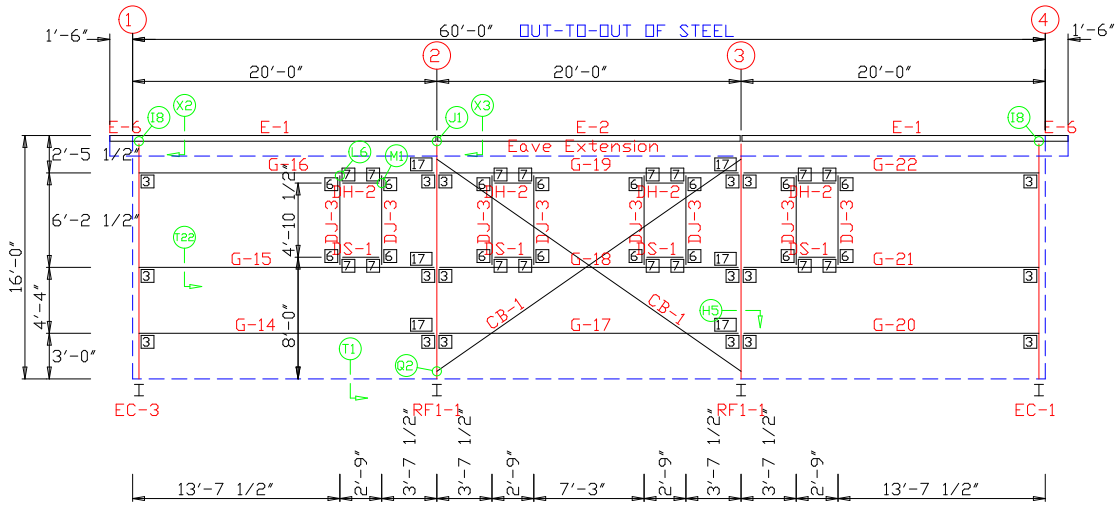
PANELS: 26 Ga. MTR Galvalume Plus

NBS NORTHERN BUILDING SYSTEMS
Dalton, MA 413-684-9916

Shelburne Falls Trolley Museum

Trolley Museum Building	ROOF FRAMING
14 Depot Street	DESIGN: zrm DRAFT: ZRM CHECK:
Shelburne Falls, MA 01370	DATE: 10/29/13 SHEET E-1 OF 10
	JOB NUMBER: 2131001

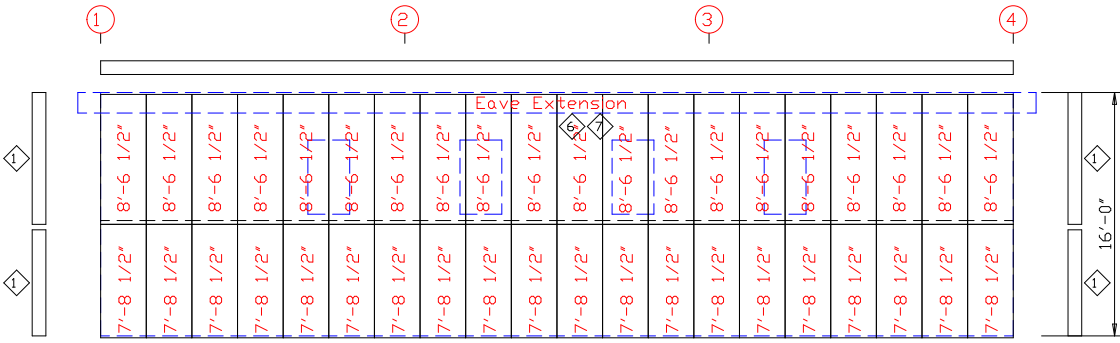
TRIM TABLE FRAME LINE C					
QID	QUAN	PART	LENGTH	DESCRIPTION	DETAIL
1	4	ITOC10	10'-2"	Outside Corner Trim	TRIM 76
2	4	NBOA10	10'-2"	D.S. Angle Trim	
3	4	ITJT10	10'-3"	Jamb Trim	TRIM 84
4	1	ITHT10	10'-3"	Head Trim	TRIM 80
5	1	SPF-1	10'-2"	Sill Trim	
6	6	NBOA10X	10'-2"	D.S. Angle Trim	
7	6	ITHT10X	10'-2"	Soffit Head Trim	



SIDEWALL FRAMING: FRAME LINE C

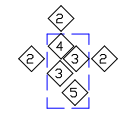
MEMBER TABLE FRAME LINE C				
QUAN	MARK	PART	LENGTH	
8	DJ-3	8x25C16	5'-6"	
4	DH-2	8x25C16	2'-9"	
4	DS-1	8x25C16	2'-9"	
2	E-1	10ESL414	19'-2 1/2"	
1	E-2	10ESL414	19'-7 1/2"	
2	E-6	10ESL414	1'-8 1/2"	
1	G-14	8x25Z14	18'-10 1/2"	
1	G-15	8x25Z12	18'-10 1/2"	
1	G-16	8x25Z14	18'-10 1/2"	
1	G-17	8x25Z14	19'-3 1/2"	
1	G-18	8x30Z14	19'-3 1/2"	
1	G-19	8x30Z16	19'-3 1/2"	
1	G-20	8x25Z14	18'-10 1/2"	
1	G-21	8x25Z12	18'-10 1/2"	
1	G-22	8x25Z14	18'-10 1/2"	
2	CB-1	CB0313	25'-0"	

CONNECTION PLATES FRAME LINE C		
QID	QUAN	MARK/PART
3	18	UGC-1
6	16	76830
7	16	76800
17	6	12Filter



SIDEWALL SHEETING & TRIM: FRAME LINE C

UPPER PANELS: 26 Ga. MTR - 500 BRANDYWINE
 LOWER PANELS: 26 Ga. MTR - 200 LIGHT STONE



TYPICAL WINDOW TRIM DETAIL

NORTHERN BUILDING SYSTEMS
 Dalton, MA 413-684-9916

Shelburne Falls Trolley Museum

Trolley Museum Building	SIDEWALL FRAMING
14 Depot Street	DESIGN: zrm DRAFT: ZRM CHECK:
Shelburne Falls, MA 01370	DATE: 10/29/13 SHEET E-2 OF 10
	JOB NUMBER: 2131001

NOTES FOR REACTIONS

- All loading conditions are examined and only maximum/minimum H or V and the corresponding H or V are reported.
- Positive reactions are as shown in the sketch. Foundation loads are in opposite directions.
- Bracing reactions are in the plane of the brace with the H pointing away from the braced bay. The vertical reaction is downward.
- Building reactions are based on the following building data:
 - Width (ft) = 40.0
 - Length (ft) = 60.0
 - Eave Height (ft) = 16.0/ 16.0
 - Roof Slope (rise/12) = 6.0/ 6.0
 - Dead Load (psf) = 5.0
 - Collateral Load (psf) = 5.0
 - Live Load (psf) = 20.0
 - Snow Load (psf) = 54.6
 - Wind Speed (mph) = 100.0
 - Wind Code = MSC 10 (IBC 09)
 - Exposure = C
 - Closed/Open = C
 - Importance Wind = 1.00
 - Importance Seismic = 1.00
 - Seismic Design Category = B
 - Seismic Coeff (Fa*SS) = 0.28

- Loading conditions are:
 - 1 Dead+Collateral+Snow+Slide Snow
 - 2 0.6Dead+Wind Left2
 - 3 0.6Dead+Wind Right2
 - 4 0.6Dead+Wind Long1+LWIND1 L2E
 - 5 0.6Dead+Wind Long1+LWIND1 R2E
 - 6 0.8Dead+0.8Collateral+0.33Live+1.07Wind Right2+1.07Wind Suction
 - 7 0.6Dead+Wind Pressure+Wind Long1
 - 8 0.6Dead+Wind Right2+Wind Suction
 - 9 0.8Dead+0.8Collateral+0.33Live+1.07Wind Left2+1.07Wind Suction
 - 10 0.6Dead+Wind Left2+Wind Suction

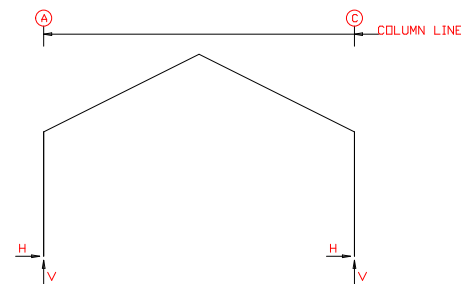
ANCHOR BOLT SUMMARY

Qty	Locate	Dia (in)	Type	Total Len (in)	Bend Len (in)	Proj (in)
Ø 12	Jamb	1/2"	A307	6.00	1.00	1.00
Ø 24	Endwall	3/4"	A307	18.0	3.00	2.50
Ø 16	Frame	3/4"	A307	18.0	3.00	2.50

BUILDING BRACING REACTIONS

Loc	Line	Col Line	± Reactions (k)				Panel Shear (lb/ft)
			Wind Horz	Wind Vert	-Seismic Horz	-Seismic Vert	
L EW	1	Bracing	In Roof	To Rigid Frame			
F SW	C	2.3	3.4	2.3	2.0	1.4	
R EW	4	Bracing	In Roof	To Rigid Frame			
B SW	A	3.2	3.3	2.3	2.0	1.4	

FRAME LINES: 2 3



RIGID FRAME: MAXIMUM REACTIONS, ANCHOR BOLTS, & BASE PLATES


Frm Line	Col Line	Column Reactions (k)						Anc. Bolt Qty Dia	Base Plate (in)			Base Elev	
		Load ID	Hmax H	V Vmax	Load ID	Hmin H	V Vmin		Width	Length	Thick		
2*	A	1	9.6	30.6	2	-5.4	-2.5	4	0.750	6.000	8.625	0.375	100'-0"
2*	C	3	5.4	-2.5	1	-9.6	30.6	4	0.750	6.000	8.625	0.375	100'-0"
2* Frame lines: 2 3													

RIGID FRAME: BASIC COLUMN REACTIONS (k)

Frame Line	Column Line	---Dead---		---Collateral---		---Live---		---Snow---		---Wind Left1---		---Wind Right1---	
		Horiz	Vert	Horiz	Vert	Horiz	Vert	Horiz	Vert	Horiz	Vert	Horiz	Vert
2*	A	1.0	3.2	0.8	2.2	2.9	8.6	7.8	25.1	-5.6	-7.3	4.3	-2.9
2*	C	-1.0	3.2	-0.8	2.2	-2.9	8.6	-7.8	25.1	-4.3	-2.9	5.6	-7.3
Frame Line	Column Line	---Wind Left2---		---Wind Right2---		---Wind Long1---		---Wind Long2---		---Seismic Left---		---Seismic Right---	
		Horiz	Vert	Horiz	Vert	Horiz	Vert	Horiz	Vert	Horiz	Vert	Horiz	Vert
2*	A	-6.0	-4.5	3.9	-0.1	0.2	-9.2	-0.2	-6.4	-0.8	-0.6	0.8	0.6
2*	C	-3.9	-0.1	6.0	-4.5	-0.2	-9.2	0.2	-6.4	-0.8	0.6	0.8	-0.6
Frame Line	Column Line	-Seismic Long		LWIND1 L2E-		LWIND1 R2E-		LWIND2 L2E-		LWIND2 R2E-		FIUNB SL L-	
		Horiz	Vert	Horiz	Vert	Horiz	Vert	Horiz	Vert	Horiz	Vert	Horiz	Vert
2*	A	0.0	-1.4	0.2	-0.7	-0.3	-0.7	0.3	-0.3	-0.2	-0.7	-6.5	20.8
2*	C	0.0	-1.4	0.3	-0.3	-0.2	-0.7	0.3	-0.3	-0.2	-0.7	-6.5	12.8
Frame Line	Column Line	FIUNB SL R-											
		Horiz	Vert										
2*	A	6.5	12.8										
2*	C	-6.5	20.8										
2* Frame lines: 2 3													

ENDWALL COLUMN: MAXIMUM REACTIONS, ANCHOR BOLTS, & BASE PLATES

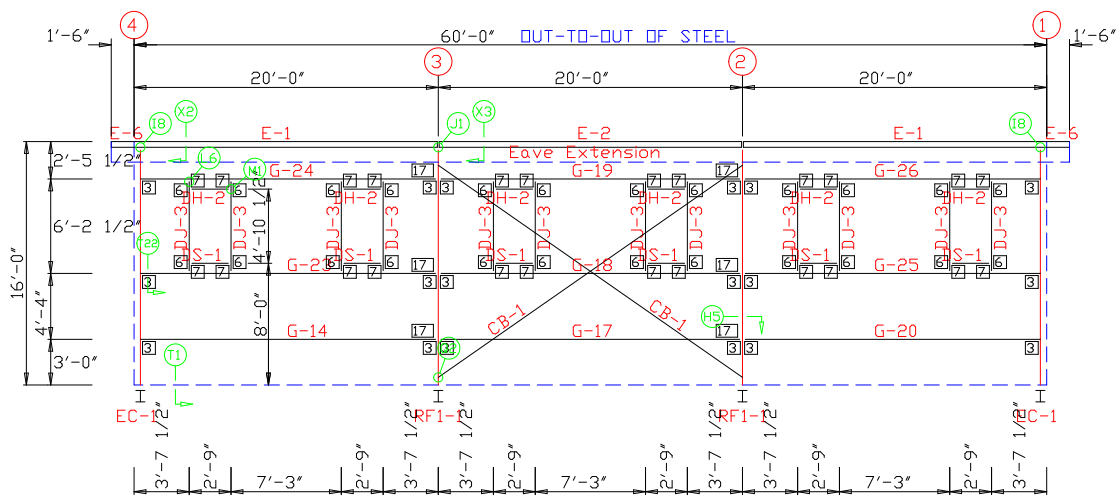
Frm Line	Col Line	Column Reactions (k)						Anc. Bolt Qty Dia	Base Plate (in)			Base Elev	
		Load ID	Hmax H	V Vmax	Load ID	Hmin H	V Vmin		Width	Length	Thick		
1	A	6	1.9	-0.5	7	-1.6	-1.5	4	0.750	6.000	10.00	0.375	100'-0"
		1	0.0	9.8	8	1.8	-2.8						
1	B	9	4.8	1.7	7	-4.1	-2.9	4	0.750	6.000	12.00	0.375	100'-0"
		1	0.0	20.1									
1	C	9	1.4	-0.5	7	-1.2	-1.1	4	0.750	6.000	10.00	0.375	100'-0"
		1	0.0	6.7	10	1.3	-1.4						
4	C	6	1.4	-0.5	7	-1.2	-1.1	4	0.750	6.000	10.00	0.375	100'-0"
		1	0.0	6.7	8	1.3	-1.4						
4	B	6	4.8	1.7	7	-4.1	-2.9	4	0.750	6.000	12.00	0.375	100'-0"
		1	0.0	20.1									
4	A	9	1.9	-0.5	7	-1.6	-1.5	4	0.750	6.000	10.00	0.375	100'-0"
		1	0.0	9.8	10	1.8	-2.8						



NBS NORTHERN BUILDING SYSTEMS
Dalton, MA 413-684-9916

Shelburne Falls Trolley Museum

Trolley Museum Building | ANCHOR BOLT REACTIONS
14 Depot Street | DESIGN: zrm | DRAFT: ZRM | CHECK:
Shelburne Falls, MA 01370 | DATE: 10/29/13 | SHEET AB-2 OF 2
JOB NUMBER: 2131001

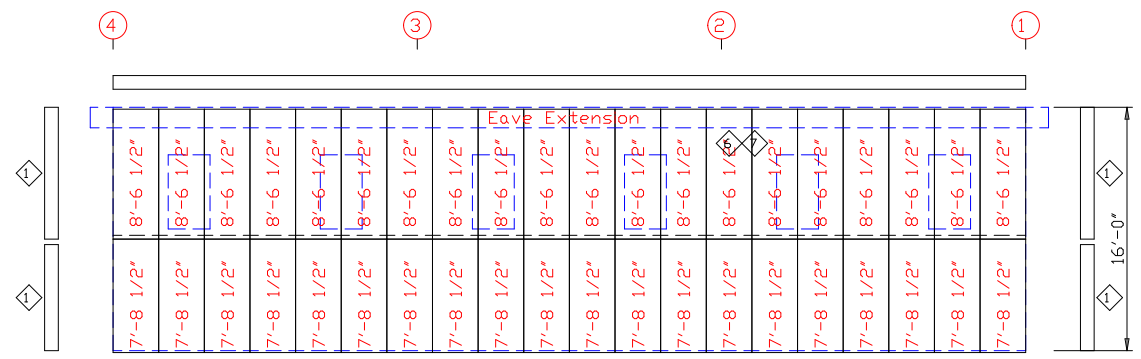


SIDEWALL FRAMING: FRAME LINE A

TRIM TABLE FRAME LINE A					
OID	QUAN	PART	LENGTH	DESCRIPTION	DETAIL
1	4	ITOC10	10'-2"	Outside Corner Trim	TRIM 76
2	6	NBOA10	10'-2"	D.S. Angle	
3	6	ITJT10	10'-3"	Jamb Trim	TRIM 84
4	2	ITHT10	10'-3"	Head Trim	TRIM 80
5	2	SPF-1	10'-2"	Sill Trim	
6	6	NBOA10X	10'-2"	D.S. Angle Trim	
7	6	ITHT10X	10'-2"	Soffit Head Trim	

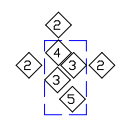
MEMBER TABLE FRAME LINE A			
QUAN	MARK	PART	LENGTH
12	DJ-3	8x25C16	5'-6"
6	DH-2	8x25C16	2'-9"
6	DS-1	8x25C16	2'-9"
2	E-1	10ESL414	19'-2 1/2"
1	E-2	10ESL414	19'-7 1/2"
2	E-6	10ESL414	1'-8 1/2"
1	G-14	8x25Z14	18'-10 1/2"
1	G-17	8x25Z14	19'-3 1/2"
1	G-18	8x30Z14	19'-3 1/2"
1	G-19	8x30Z16	19'-3 1/2"
1	G-20	8x25Z14	18'-10 1/2"
1	G-23	8x30Z14	18'-10 1/2"
1	G-24	8x30Z16	18'-10 1/2"
1	G-25	8x30Z14	18'-10 1/2"
1	G-26	8x30Z16	18'-10 1/2"
2	CB-1	CB0313	25'-0"

CONNECTION PLATES FRAME LINE A		
OID	QUAN	MARK/PART
3	18	UGC-1
6	24	76830
7	24	76800
17	6	12Filter



SIDEWALL SHEETING & TRIM: FRAME LINE A

UPPER PANELS: 26 Ga. MTR - 500 BRANDYWINE
 LOWER PANELS: 26 Ga. MTR - 200 LIGHT STONE

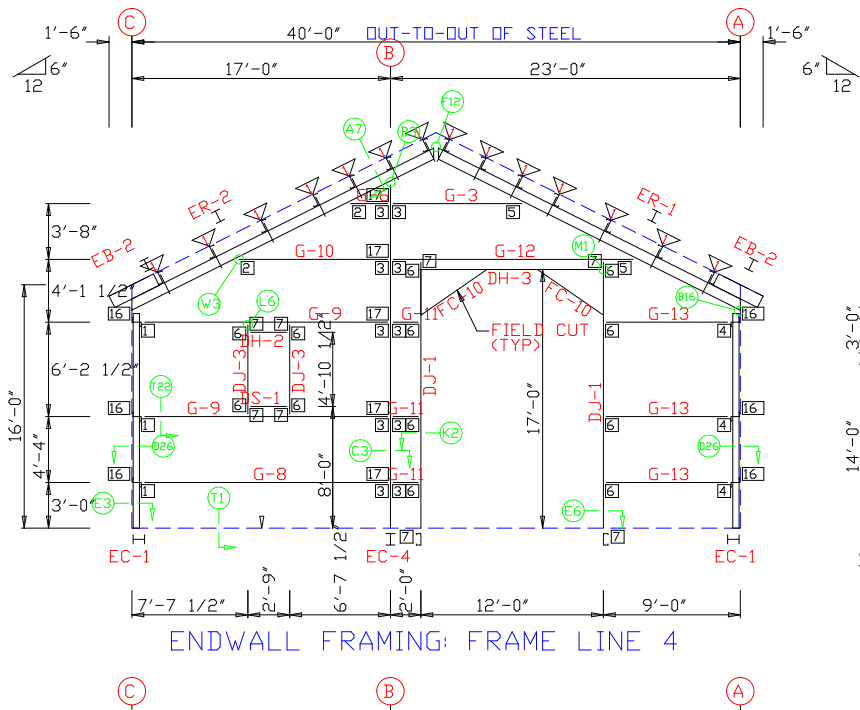


TYPICAL WINDOW TRIM DETAIL

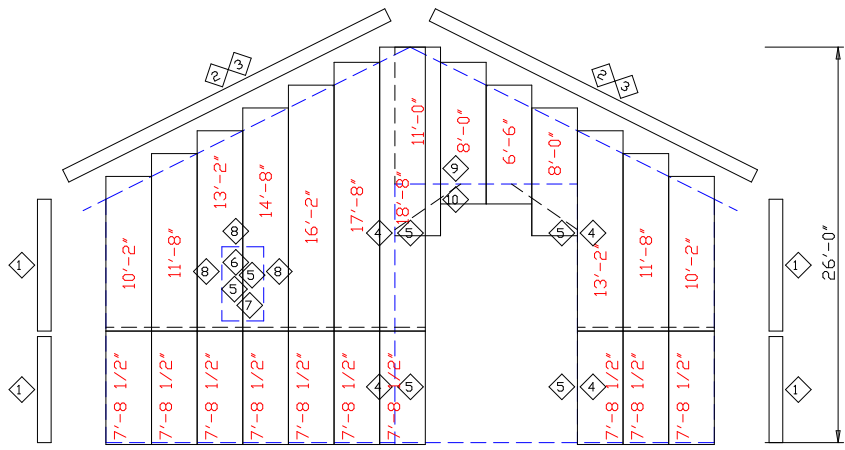
NORTHERN BUILDING SYSTEMS
 Dalton, MA 413-684-9916

Shelburne Falls Trolley Museum

Trolley Museum Building	SIDEWALL FRAMING
14 Depot Street	DESIGN: zrm DRAFT: ZRM CHECK:
Shelburne Falls, MA 01370	DATE: 10/29/13 SHEET E-3 OF 10
	JOB NUMBER: 2131001



ENDWALL FRAMING: FRAME LINE 4



ENDWALL SHEETING & TRIM: FRAME LINE 4

UPPER PANELS: 26 Ga. MTR - 500 BRANDYWINE
 LOWER PANELS: 26 Ga. MTR - 200 LIGHT STONE


TRIM TABLE FRAME LINE 4					
ID	QUAN	PART	LENGTH	DESCRIPTION	DETAIL
1	3	ITOC10	10'-2"	Outside Corner Trim	TRIM 76
2	4	ITHT10	10'-3"	Head Trim	
3	4	ITHT14	14'-3"	Head Trim	
4	4	ITHT10	10'-3"	Head/Jamb Cap	
5	5	ITJT10	10'-3"	Jamb Trim	TRIM 84
6	1	ITHT10	10'-3"	Head Trim	TRIM 80
7	1	SPF-1	10'-2"	Sill Trim	
8	2	NBDA10	10'-3"	D.S. Angle Trim	
9	1	ITHT14	14'-3"	Head/Jamb Cap	
10	1	ITHT14	14'-3"	Head Trim	TRIM 80

BOLT TABLE FRAME LINE 4				
LOCATION	QUAN	TYPE	DIA	LENGTH
ER-1/ER-2	8	A325	5/8"	1 3/4"
Cor Column/Raf	4	A325	5/8"	1 3/4"
EC-4/ER-2	4	A325	5/8"	1 3/4"

MEMBER TABLE FRAME LINE 4			
QUAN	MARK	PART	LENGTH
2	EB-2	W10X12	2'-7 13/16"
2	EC-1	W10X12	14'-4 11/16"
1	EC-4	W12X14	22'-6 3/16"
1	ER-1	W12X19	22'-4 5/16"
1	ER-2	W12X19	22'-4 5/16"
2	DJ-1	8x25C12	17'-3 3/4"
2	DJ-3	8x25C16	5'-6"
1	DH-2	8x25C16	2'-9"
1	DH-3	8x25C16	12'-0"
1	DS-1	8x25C16	2'-9"
1	G-3	8x25Z16	7'-6 3/16"
1	G-6	8x25Z16	1'-6 3/16"
1	G-8	8x25Z16	15'-8 5/8"
2	G-9	8x25Z16	15'-8 5/8"
1	G-10	8x25Z16	8'-10 3/16"
3	G-11	8x25Z16	1'-3 1/2"
1	G-12	8x25Z12	14'-10 3/16"
3	G-13	8x25Z16	7'-8 5/8"

FLANGE BRACE TABLE FRAME LINE 4			
VID	QUAN	MARK	LENGTH
1	14	FB21.9	1'-9 7/8"

CONNECTION PLATES FRAME LINE 4			
ID	QUAN	MARK/PART	
1	3	GC-1L	
2	2	GC-1LX	
3	10	UGC-1	
4	3	GC-1R	
5	2	GC-1RX	
6	12	76830	
7	8	76800	
16	6	24Filler	
17	5	12Filler	



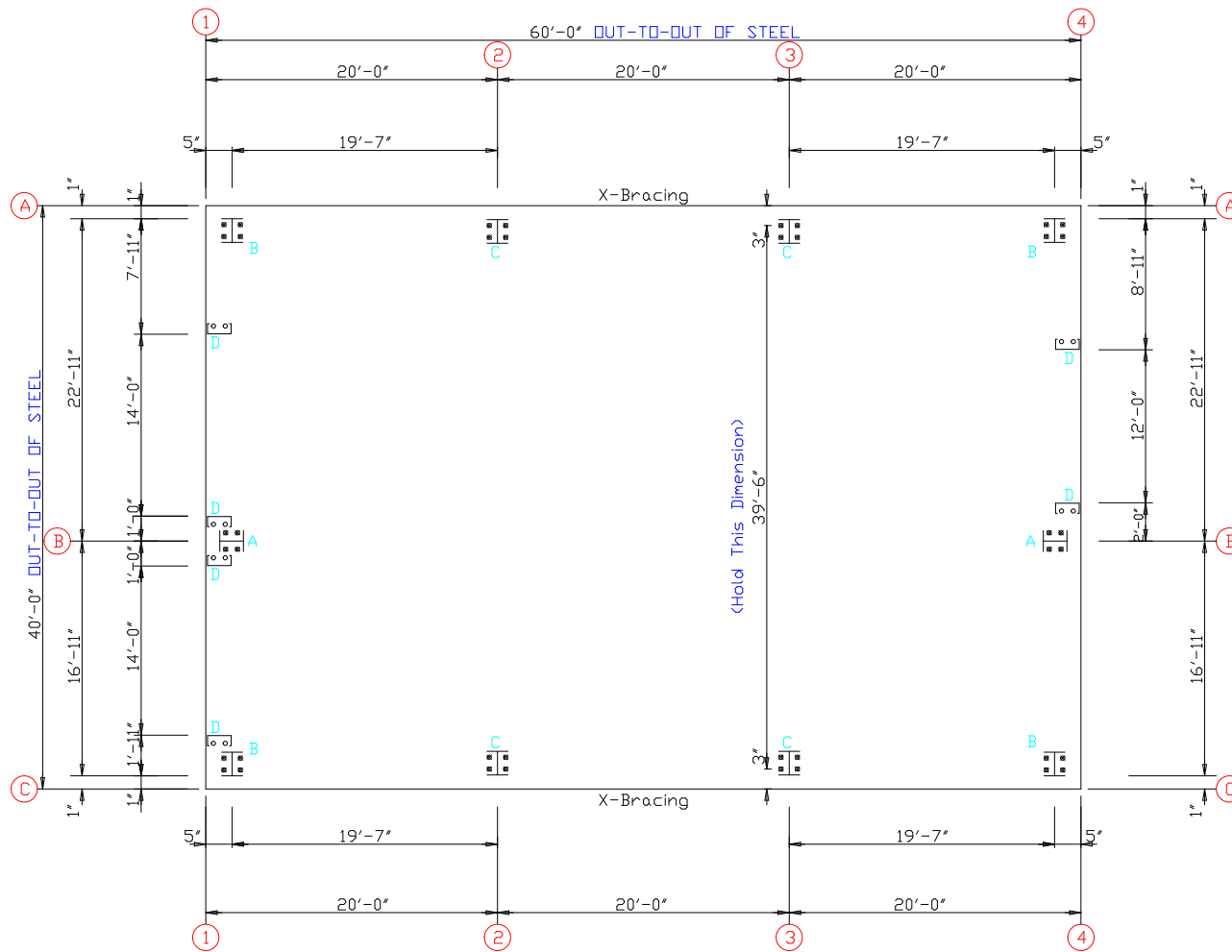
NBS NORTHERN BUILDING SYSTEMS
 Dalton, MA 413-684-9916

Shelburne Falls Trolley Museum

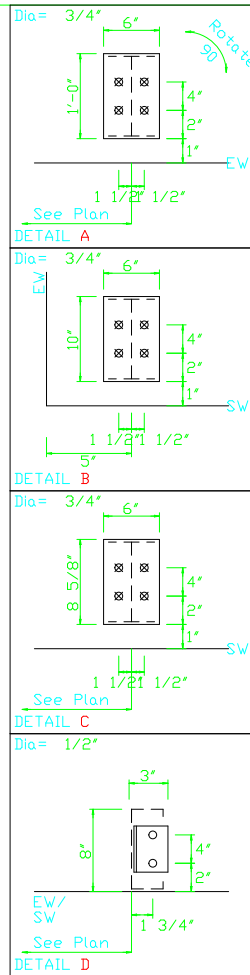
Trolley Museum Building


14 Depot Street
 Shelburne Falls, MA 01370

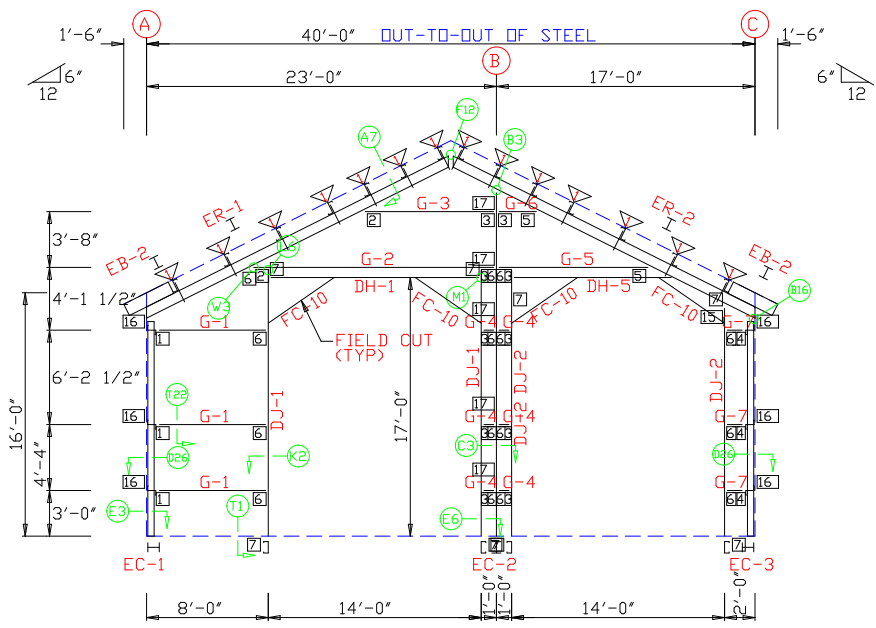
ENDWALL FRAMING
 DESIGN: zrm DRAFT: ZRM CHECK:
 DATE: 10/29/13 SHEET E-5 OF 10
 JOB NUMBER: 2131001



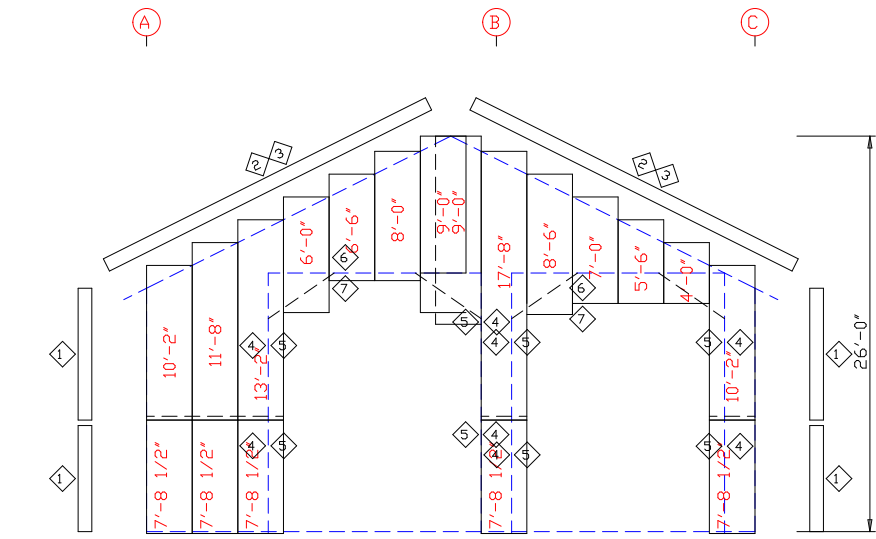
ANCHOR BOLT PLAN
 NOTE: All Base Plates @ 100'-0" (U.N.)



 NBS	NORTHERN BUILDING SYSTEMS Dalton, MA 413-684-9916	
	Shelburne Falls Trolley Museum	
Trolley Museum Building 14 Depot Street Shelburne Falls, MA 01370		ANCHOR BOLT PLAN & DETAILS DESIGN: zrm DRAFT: ZRM CHECK: DATE: 10/29/13 SHEET AB-1 OF 2 JOB NUMBER: 2131001



ENDWALL FRAMING: FRAME LINE 1



ENDWALL SHEETING & TRIM: FRAME LINE 1

UPPER PANELS: 26 Ga. MTR - 500 BRANDYWINE
 LOWER PANELS: 26 Ga. MTR - 200 LIGHT STONE


TRIM TABLE FRAME LINE 1					
OID	QUAN	PART	LENGTH	DESCRIPTION	DETAIL
1	3	ITOC10	10'-2"	Outside Corner Trim	RIM 76
2	4	ITHT10	10'-3"	Head Trim	
3	4	ITHT14	14'-3"	Head Trim	
4	4	ITHT10	10'-3"	Head/Jamb Cap	
5	4	ITJT10	10'-3"	Jamb Trim	TRIM 84
6	2	ITHT14	14'-3"	Head/Jamb Cap	
7	2	ITHT14	14'-3"	Head Trim	TRIM 80

BOLT TABLE FRAME LINE 1				
LOCATION	QUAN	TYPE	DIA	LENGTH
ER-1/ER-2	8	A325	5/8"	1 3/4"
Cor Column/Raf	4	A325	5/8"	1 3/4"
EC-2/ER-2	4	A325	5/8"	1 3/4"

MEMBER TABLE FRAME LINE 1			
QUAN	MARK	PART	LENGTH
2	EB-2	W10X12	2'-7 13/16"
1	EC-1	W10X12	14'-4 11/16"
1	EC-2	W12X14	22'-6 3/16"
1	EC-3	W10X12	14'-4 11/16"
1	ER-1	W12X19	22'-4 5/16"
1	ER-2	W12X19	22'-4 5/16"
2	DJ-1	8x25C12	17'-3 3/4"
2	DJ-2	8x25C12	17'-3 3/4"
1	DH-1	8x25C16	14'-0"
1	DH-5	8x25C16	9'-6 7/16"
3	G-1	8x25Z16	6'-8 5/8"
1	G-2	8x25Z12	14'-10 3/16"
1	G-3	8x25Z16	7'-6 3/16"
6	G-4	8x25Z16	3 1/2"
1	G-5	8x25Z16	8'-10 3/16"
1	G-6	8x25Z16	1'-6 3/16"
3	G-7	8x25Z16	8 5/8"

FLANGE BRACE TABLE FRAME LINE 1			
VID	QUAN	MARK	LENGTH
1	14	FB21.9	1'-9 7/8"

CONNECTION PLATES FRAME LINE 1		
OID	QUAN	MARK/PART
1	3	GC-1L
2	2	GC-1LX
3	10	UGC-1
4	3	GC-1R
5	2	GC-1RX
6	15	76830
7	8	76800
15	1	GC-1RX
16	6	24Filler
17	5	12Filler



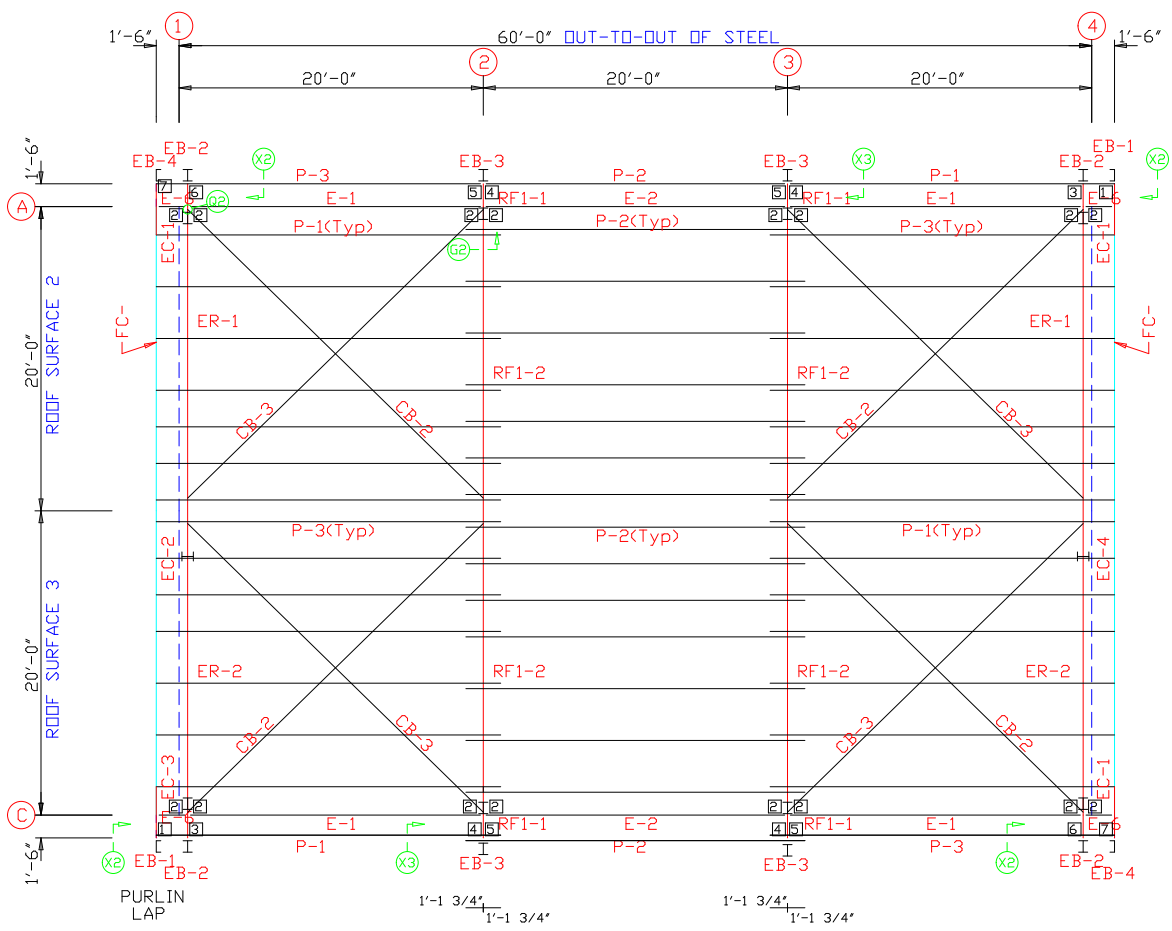
NORTHERN BUILDING SYSTEMS
 Dalton, MA 413-684-9916

Shelburne Falls Trolley Museum

Trolley Museum Building

14 Depot Street
 Shelburne Falls, MA 01370

ENDWALL FRAMING
 DESIGN: zrm DRAFT: ZRM CHECK:
 DATE: 10/29/13 SHEET E-4 OF 10
 JOB NUMBER: 2131001



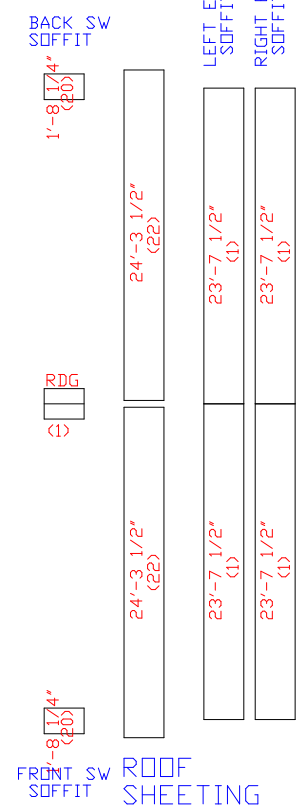
ROOF FRAMING PLAN

EXTENSION/CANOPY BOLTS ROOF PLAN				
MARK	QUAN	TYPE	DIA	LENGTH
EB-2	4	A325	5/8"	1 1/2"
EB-3	4	A325	5/8"	1 1/2"

TRIM TABLE ROOF PLAN		
ID MARK	LENGTH	DETAIL
RDG	10'-3"	TRIM 173
RDG	14'-3"	TRIM 173

MEMBER TABLE ROOF PLAN		
MARK	PART	LENGTH
EB-1	10FC063	3'-6 5/16"
EB-2	W10X12	2'-7 13/16"
EB-3	W10X12	2'-8 1/16"
EB-4	10FC063	3'-6 5/16"
P-1	10x25Z14	22'-7 1/2"
P-2	10x25Z14	22'-3 1/2"
P-3	10x25Z14	22'-7 1/2"
E-1	10ESL414	19'-2 1/2"
E-2	10ESL414	19'-7 1/2"
E-6	10ESL414	1'-8 1/2"
CB-2	CB0250	29'-0"
CB-3	CB0250	29'-1"

CONNECTION PLATES ROOF PLAN	
ID	MARK/PART
1	e1
2	76830X
3	e2
4	e3
5	e4
6	e5
7	e6

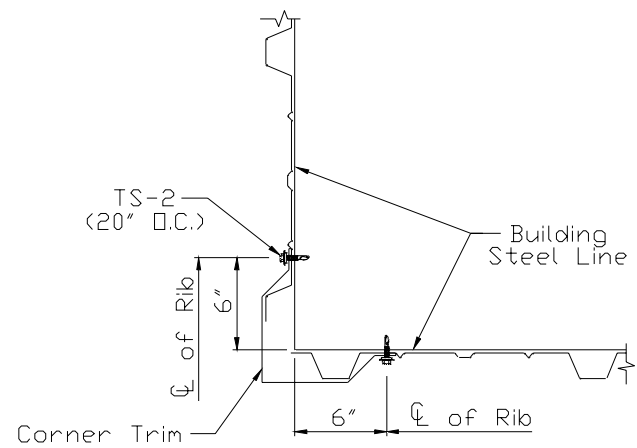


ROOF SHEETING
PANELS: 26 Ga. MTR Galvalume Plus

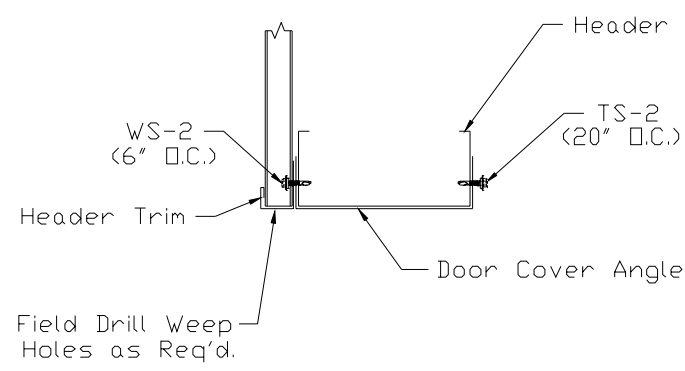
NORTHERN BUILDING SYSTEMS
Dalton, MA 413-684-9916

Shelburne Falls Trolley Museum

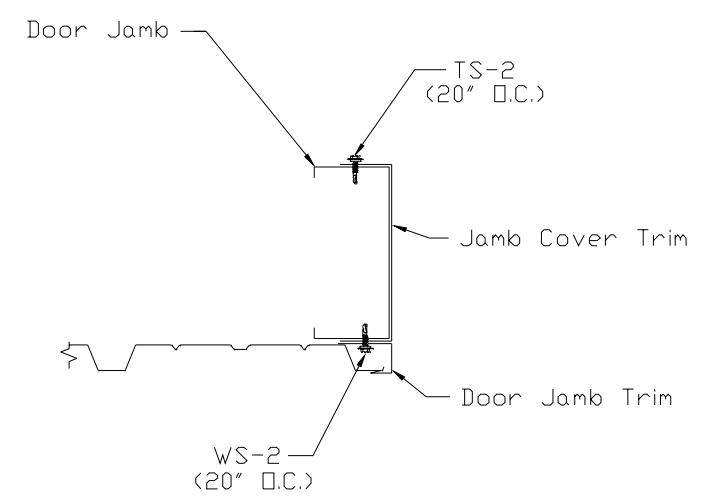
Trolley Museum Building	ROOF FRAMING
14 Depot Street	DESIGN: zrm DRAFT: ZRM CHECK:
Shelburne Falls, MA 01370	DATE: 10/29/13 SHEET E-1 OF 10
	JOB NUMBER: 2131001



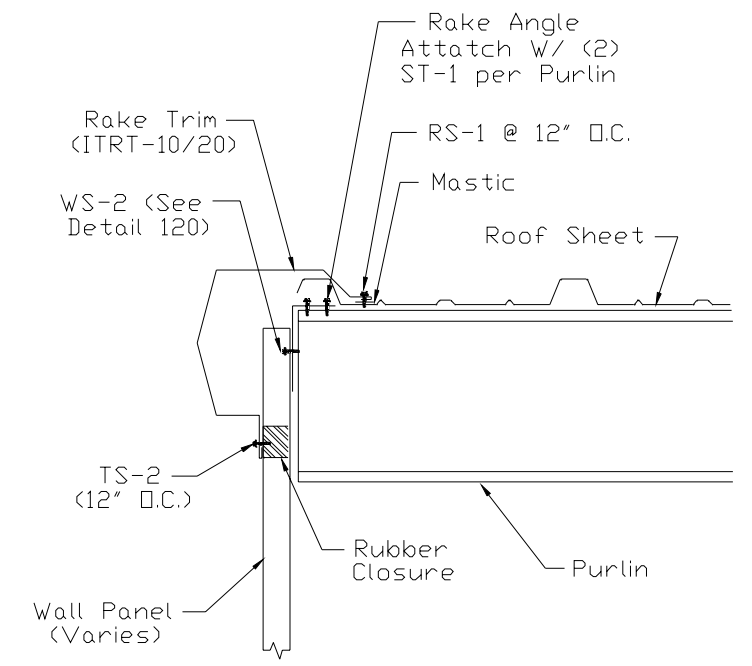
Trim 76 STANDARD ROLL CORNER TRIM
USE (6) TS-1 @ Trim Laps



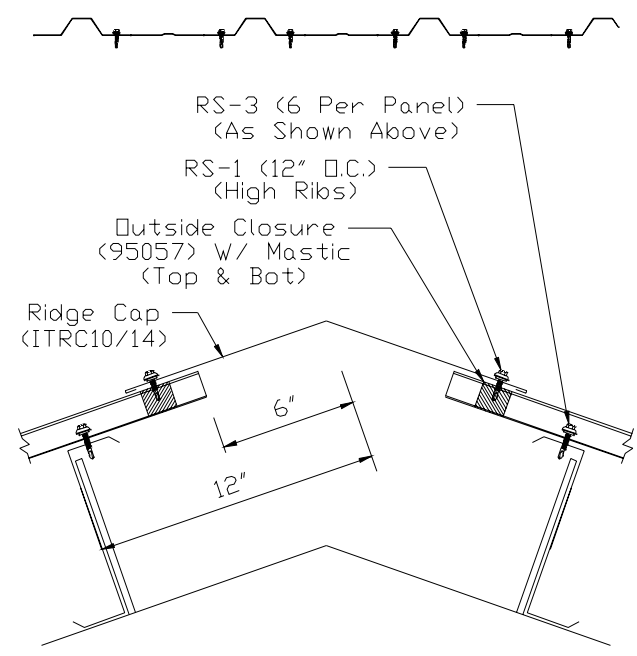
Trim 80 HEADER TRIM
USE (4) TS-1 @ Trim Laps



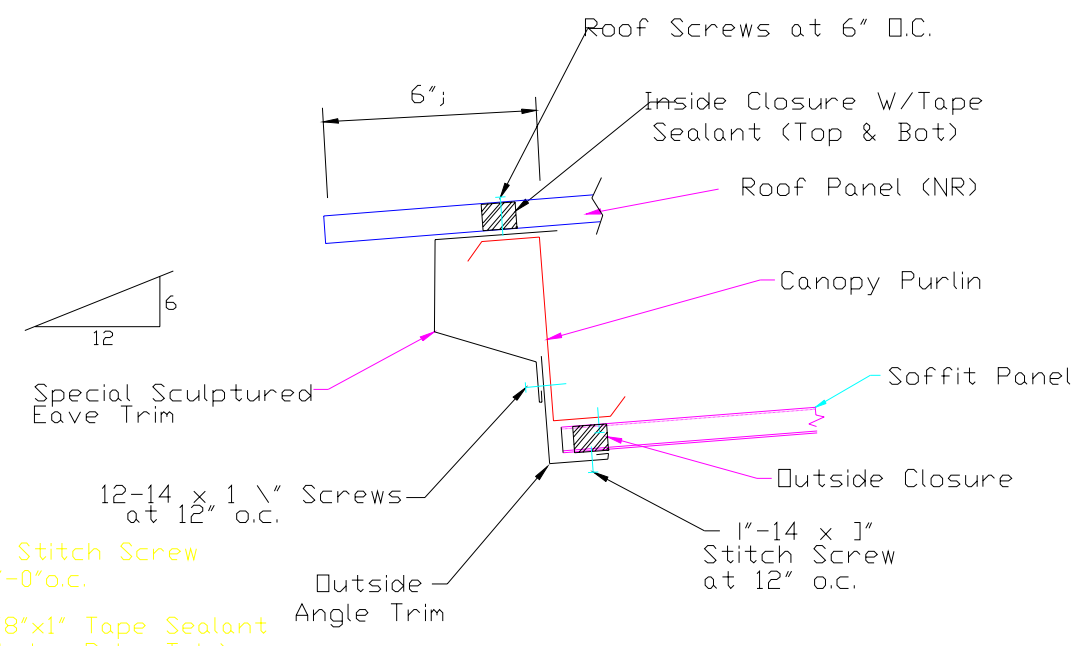
Trim 84 JAMB TRIM
USE (4) TS-1 @ Trim Laps



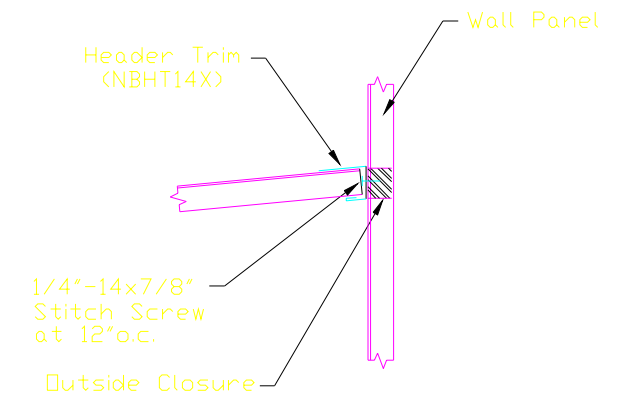
Trim 151 MTR Rake Trim
Start or End on Module



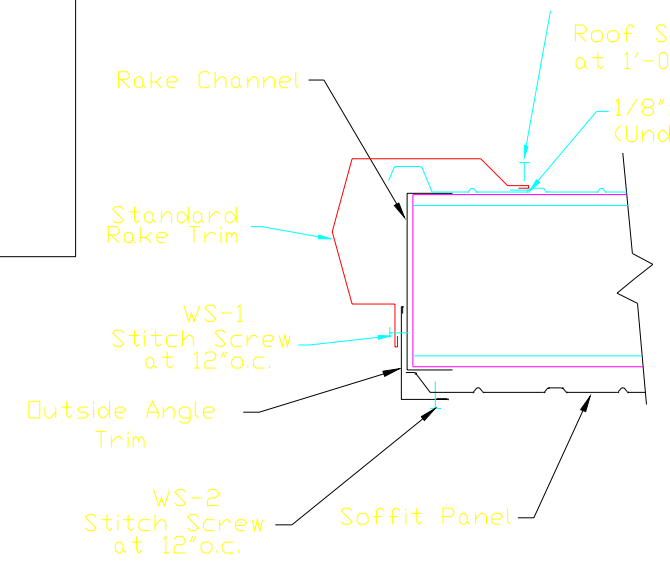
Trim 173 MTR Ridge Cap



Trim XI Section at Eave Canopy
w/ Sculptured Eave Trim



SOFFIT TERMINATION DETAIL
Use (3) 10-16x3/4" at Trim Laps



Trim 75 GABLE SOFFIT DETAIL

NBS NORTHERN BUILDING SYSTEMS
Dalton, MA 413-684-9916

Shelburne Falls Trolley Museum
Trolley Museum Building
14 Depot Street
Shelburne Falls, MA 01370

DETAIL DRAWINGS
DESIGN: zrm DRAFT: ZRM CHECK:
DATE: 10/29/13 SHEET E-10 OF 10
JOB NUMBER: 2131001



ROOF SCREWS

- † RS-1 = S4676-FL = 12-14 x 1-1/2"
- † RS-2 = S5065-FM = 1/4"-14 x 7/8"
- † RS-3 = S4742-FL = 12-24 x 1-1/2"
- † RS-4 = S4576FL = 12-14 x 1"



WALL SCREWS

- † WS-1 = S4721-FG = 12-14 x 1-1/2"
- † WS-2 = S5076-FF = 1/4"-14 x 7/8"



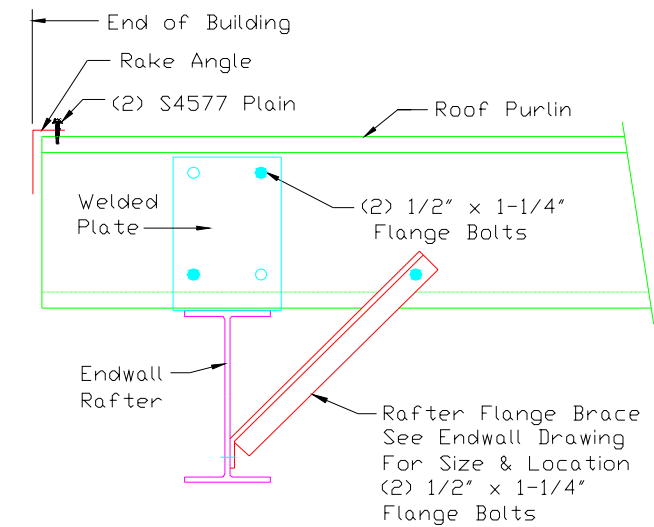
TRIM SCREWS

- † TS-1 = S2701 = 10 x 16 x 3/4" SD
- † TS-2 = S5076-FF = 1/4"-14 x 7/8"



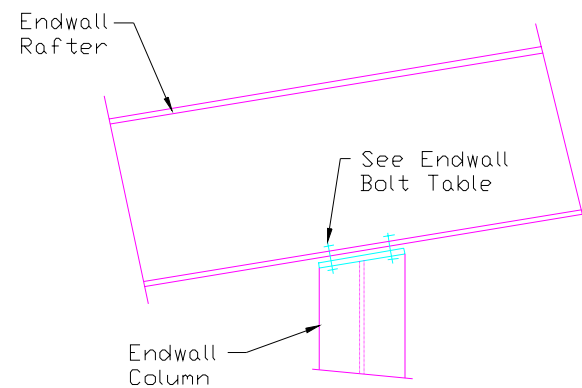
STRUCTURAL SCREWS

- † ST-1 = S4577 = 12-14 x 1"
- † ST-2 = S5201 = 1/4"-14 x 1-1/4"
- † ST-3 = S5221 = 1/4"-14 x 1-1/4" SH
- † ST-4 = S4668 = 12-24 x 1-1/4"
- † ST-5 = S4741 = 12-24 x 1-1/2"

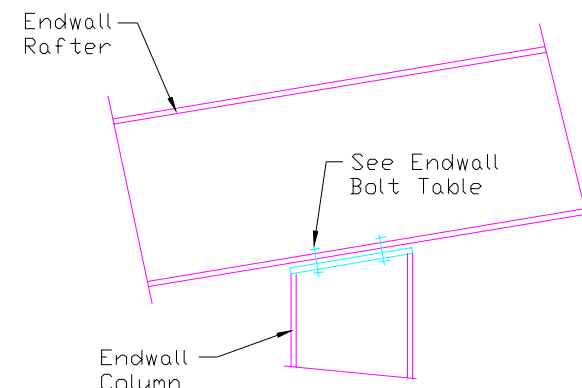


A7 Roof Purlin to Endwall Rafter

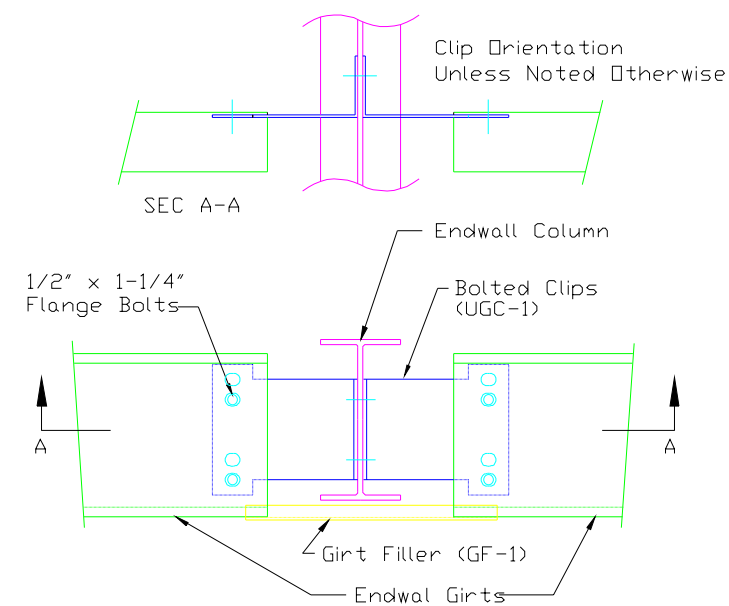
Trim 121



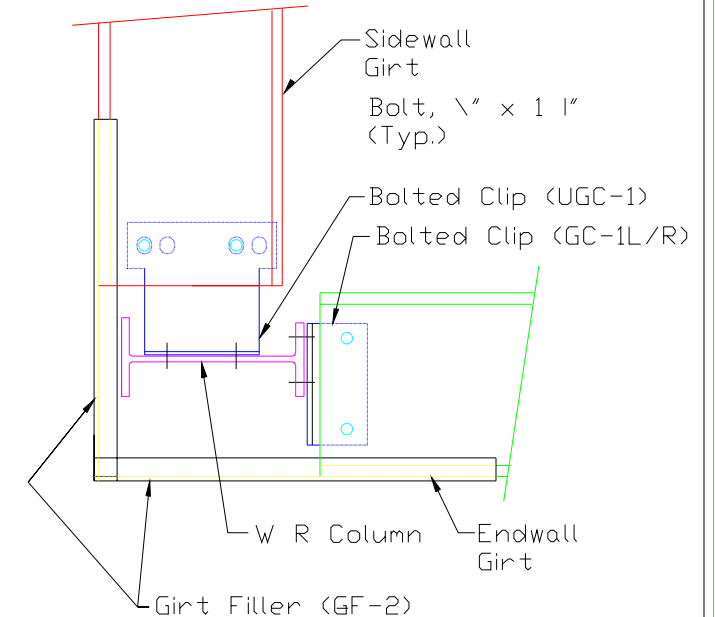
B3 Column to Endwall Rafter



B16 Turned Column to Endwall Rafter



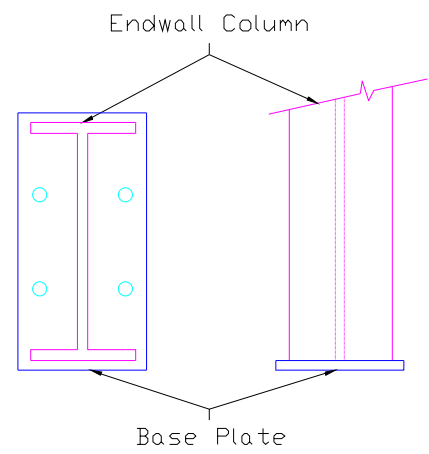
C3 Wall Girt to Endwall Column



D26 Corner Column to Wall Girt



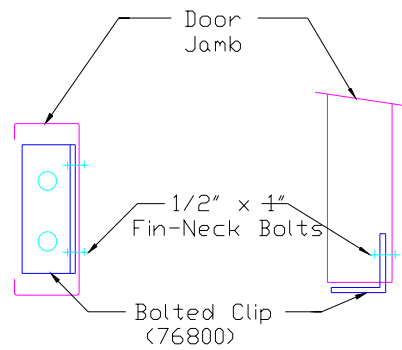
Shelburne Falls Trolley Museum		
Trolley Museum Building		
14 Depot Street Shelburne Falls, MA 01370		
DETAIL DRAWINGS		
DESIGN: zrm	DRAFT: ZRM	CHECK:
DATE: 10/29/13	SHEET E-7 OF 10	
JOB NUMBER: 2131001		



Plan View Elevation

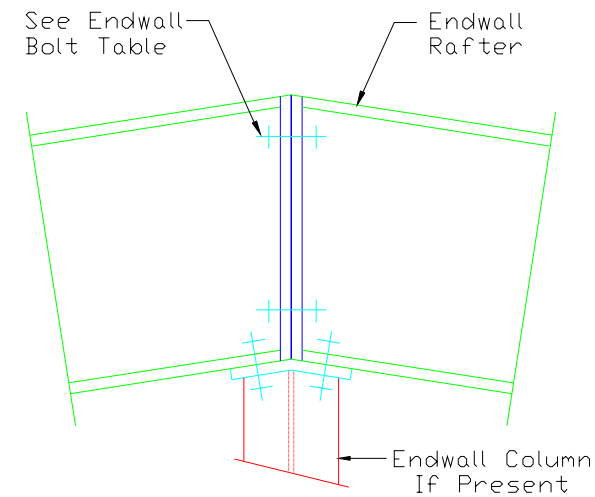
See Anchor Bolt Plan for Bolt Size and Spacing

E3 Base Plate for Endwall Column

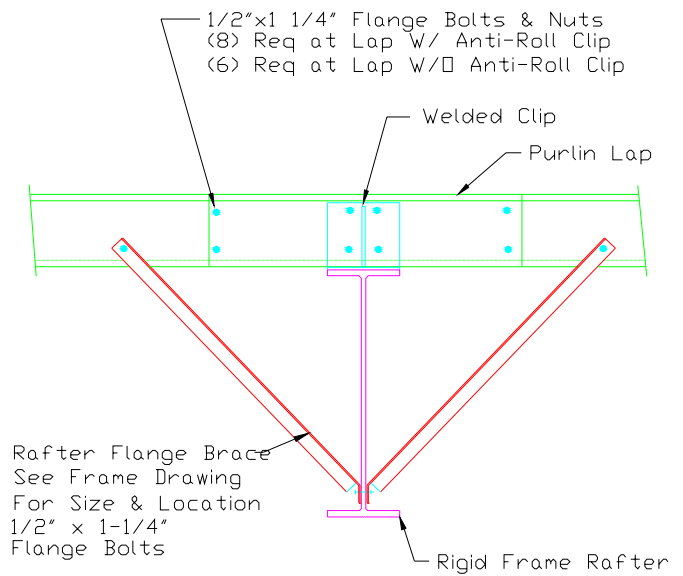


Plan View Elevation

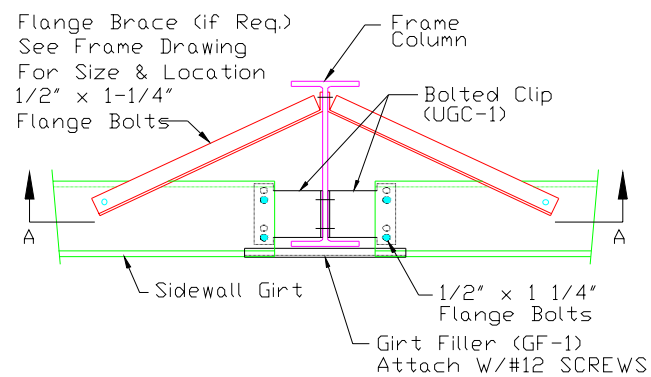
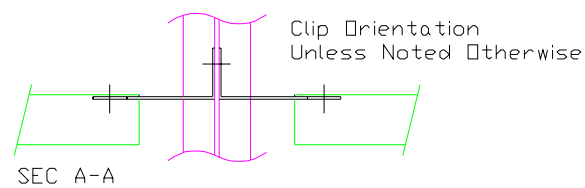
E6 Base Plate for Door Jamb



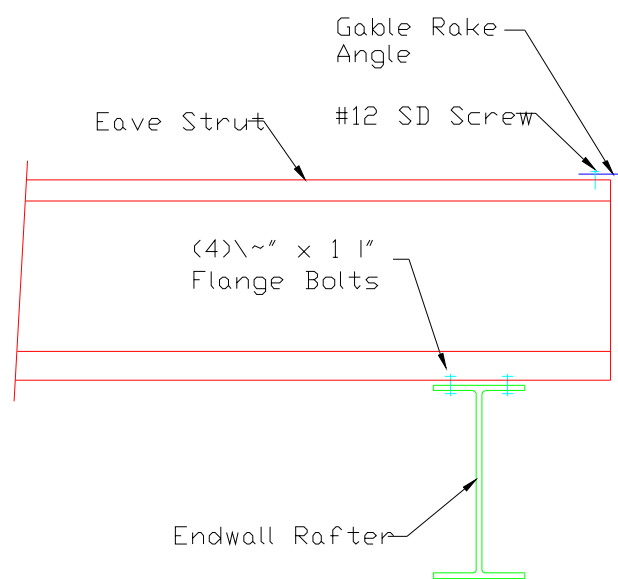
F12 Rafter Splice At Ridge



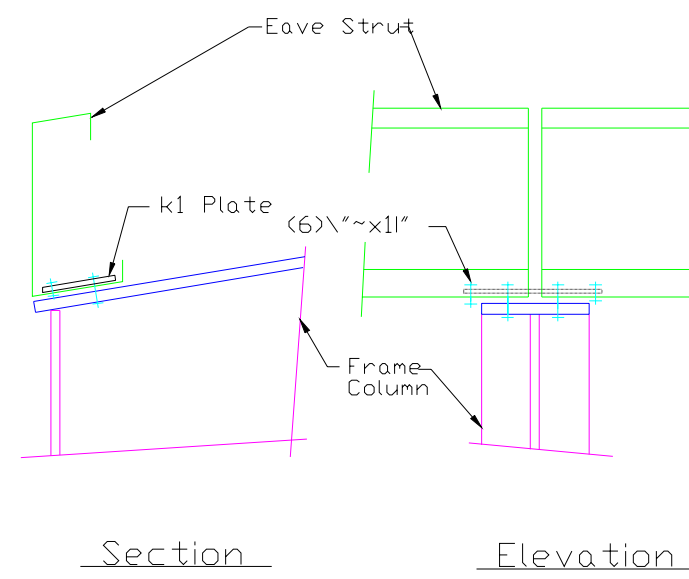
G2 Roof Purlin to Interior Frame Rafter



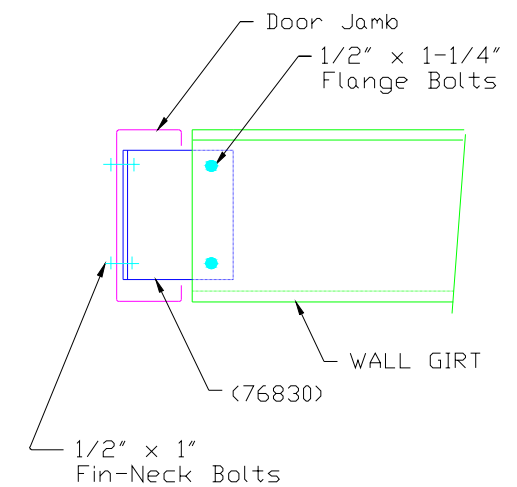
H5 Sidewall Girt to Frame Column



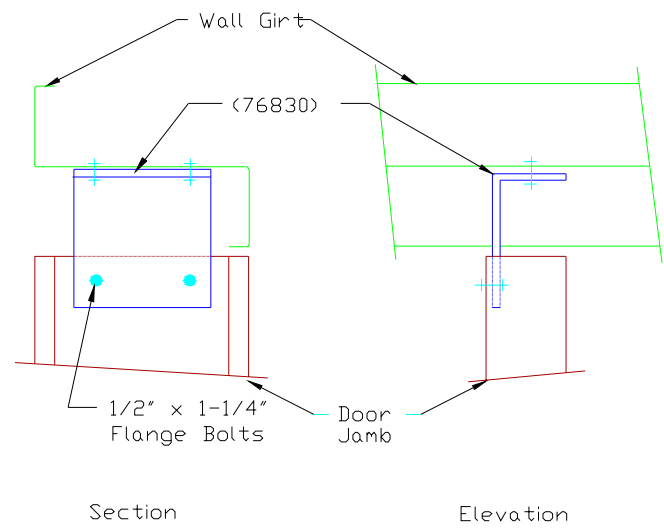
I8 Eave Strut to Endwall Rafter



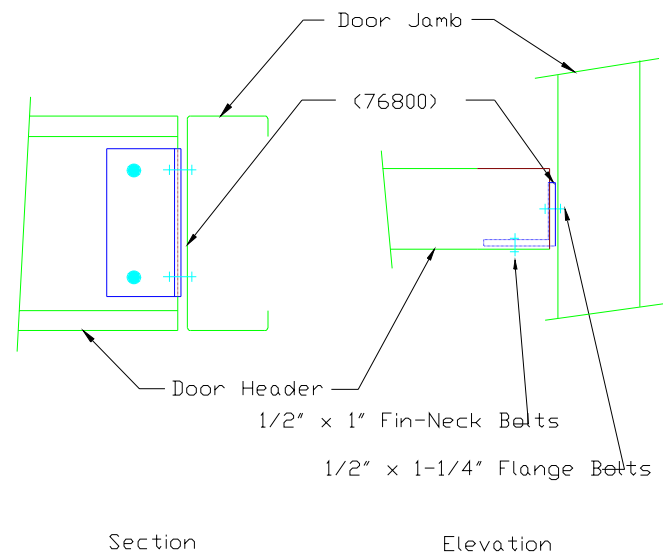
J1 Eave Strut to Rigid Frame



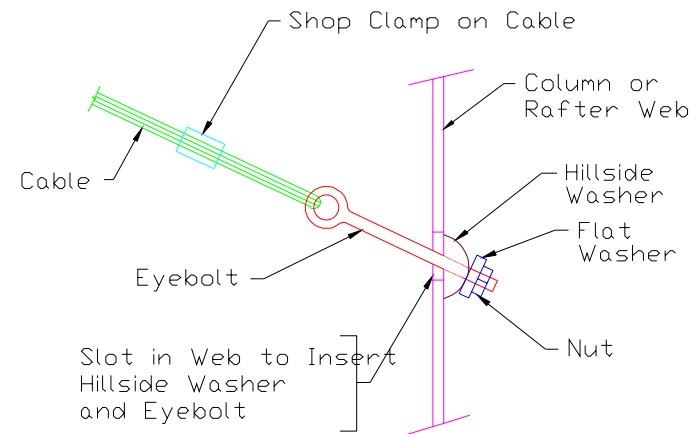
K2 Wall Girt to Door Jamb



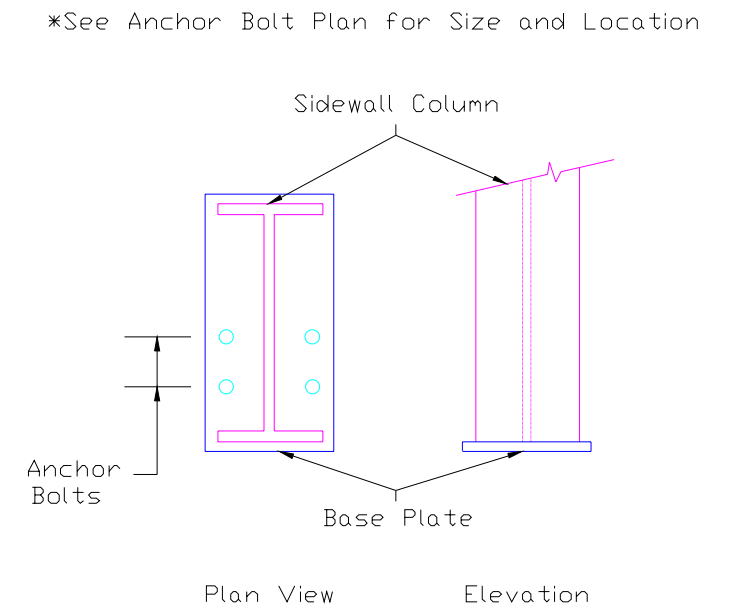
L6 Wall Girt to Door Jamb



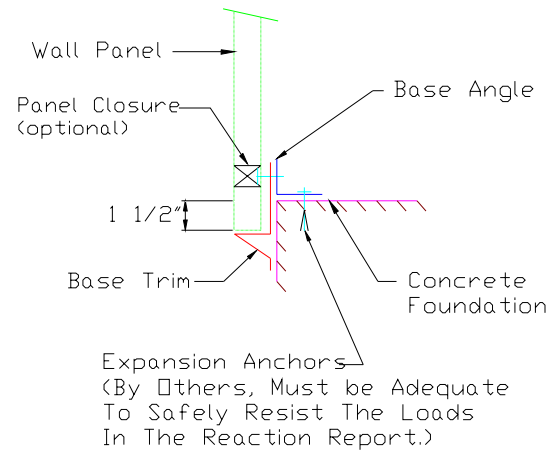
M1 Door Header to Door Jamb



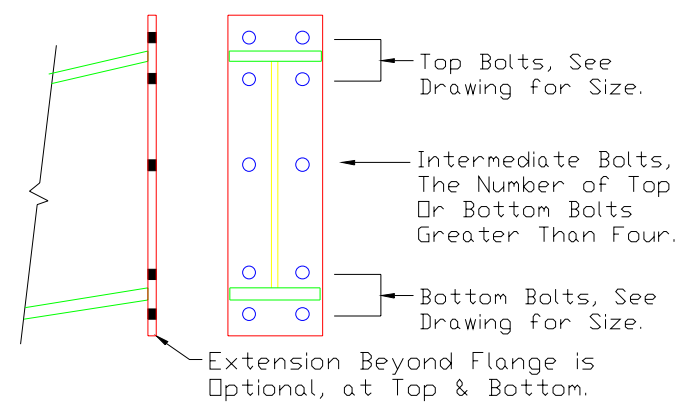
Q2 Diagonal Cable, Eyebolt End



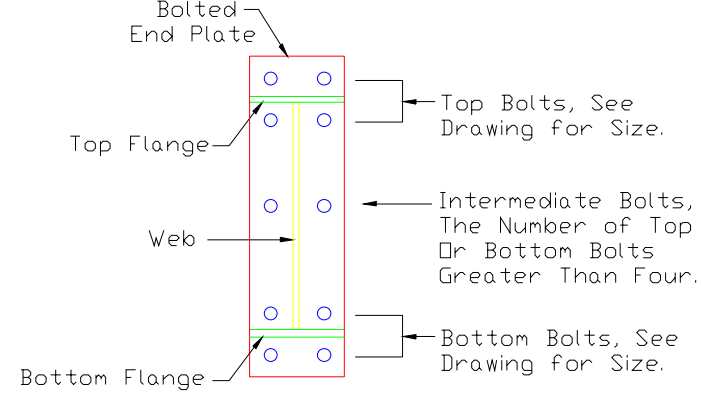
R2 Anchor Bolts at Sidewall Column



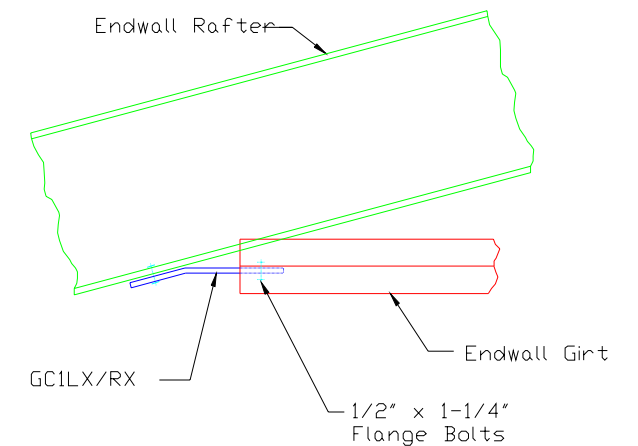
T1 Base Trim Detail



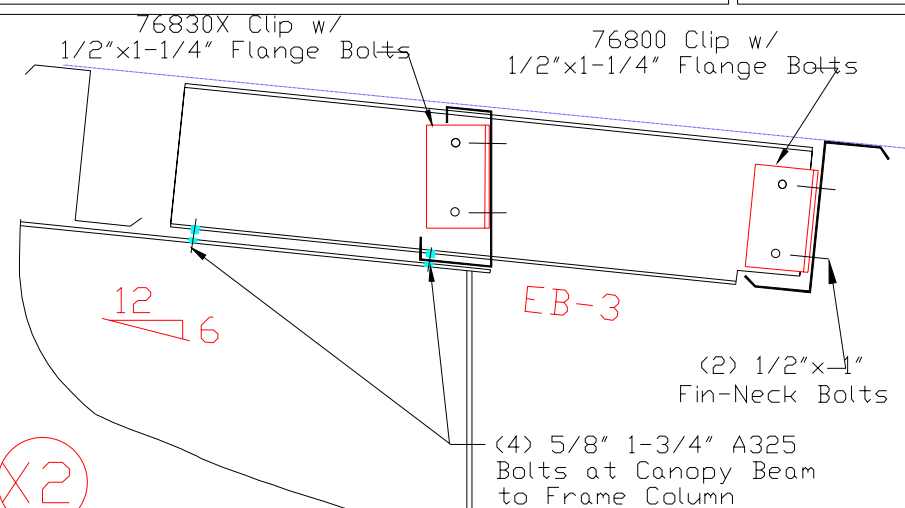
U2 Bolted End Plate Connection At Building Peak



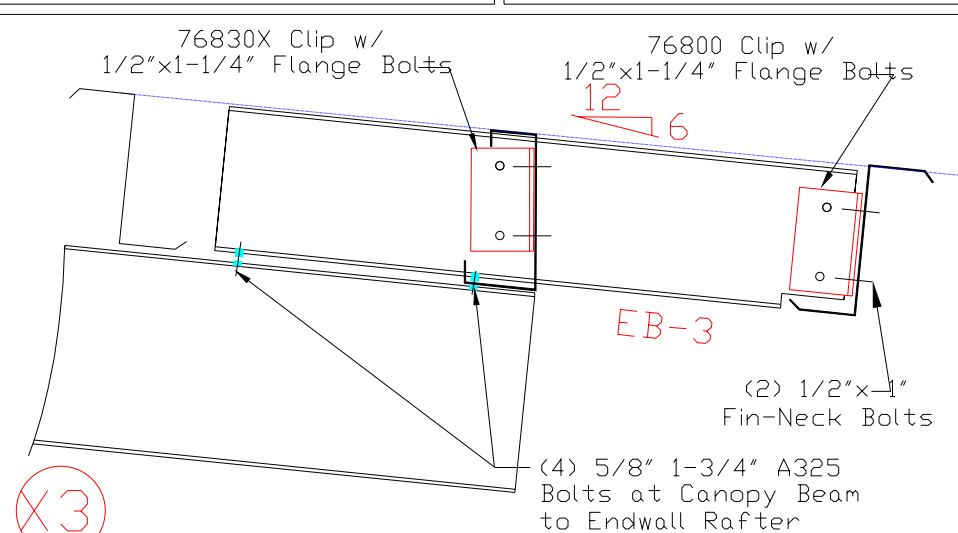
U3 Bolts for Rafter to Column Connection



W3 Flush Endwall Girt to Rafter



X2 Eave Extension Connection Detail



X3 Eave Extension Connection Detail

NBS NORTHERN BUILDING SYSTEMS
Dalton, MA 413-684-9916

Shelburne Falls Trolley Museum

Trolley Museum Building

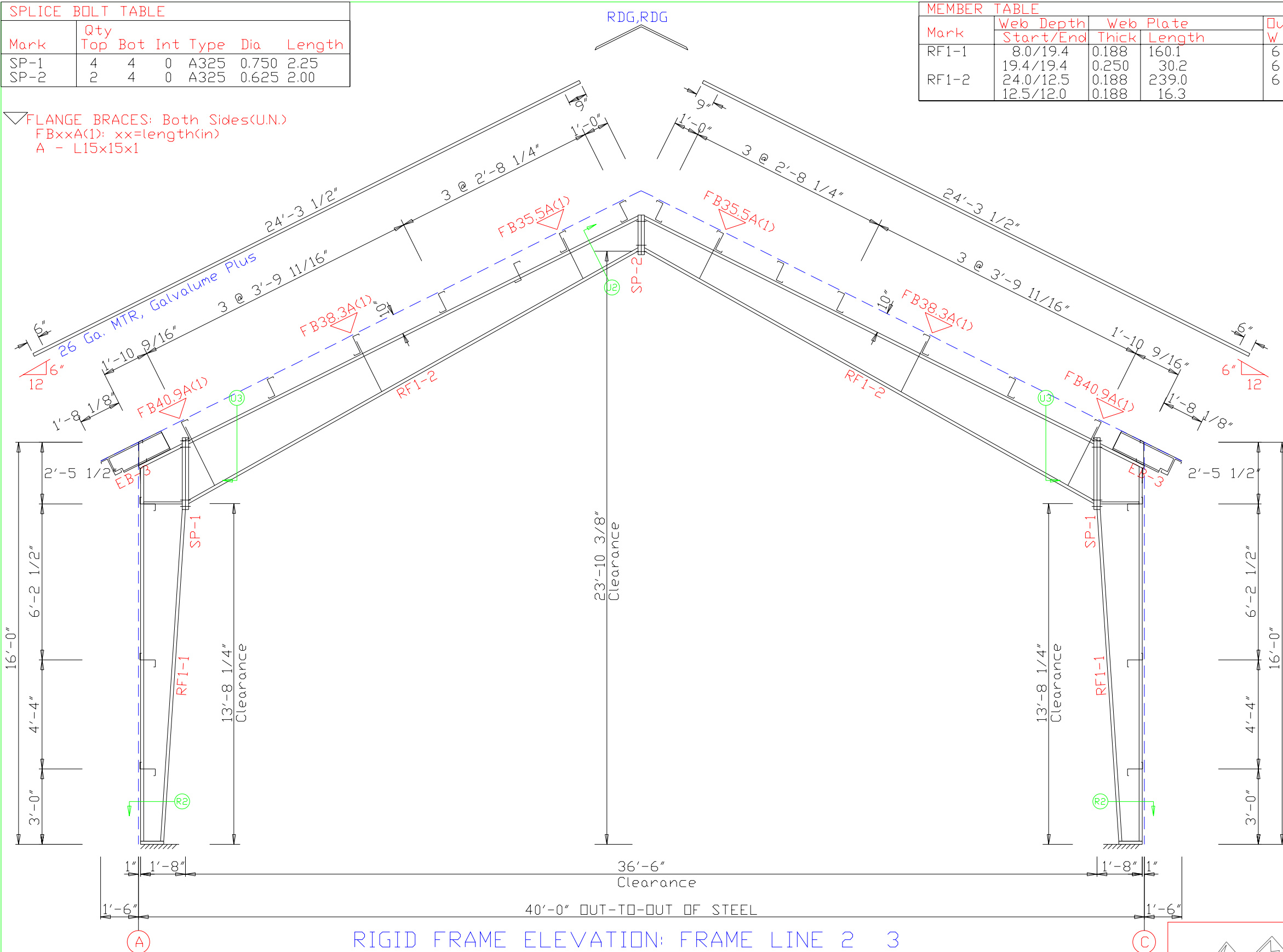
14 Depot Street
Shelburne Falls, MA 01370

DETAIL DRAWINGS
DESIGN: zrm DRAFT: ZRM CHECK:
DATE: 10/29/13 SHEET E-9 OF 10
JOB NUMBER: 2131001

SPLICE BOLT TABLE						
Mark	Qty		Int	Type	Dia	Length
	Top	Bot				
SP-1	4	4	0	A325	0.750	2.25
SP-2	2	4	0	A325	0.625	2.00

MEMBER TABLE										
Mark	Web Depth		Web Plate		Outside Flange		Inside Flange			
	Start	End	Thick	Length	W	Thk	Length	W	Thk	Length
RF1-1	8.0	19.4	0.188	160.1	6	1/4"	180.5	6	3/8"	160.5
RF1-2	19.4	19.4	0.250	30.2	6	3/8"	22.9	6	1/4"	243.2
RF1-2	24.0	12.5	0.188	239.0	6	1/4"	243.2	6	5/16"	249.4
	12.5	12.0	0.188	16.3						

FLANGE BRACES: Both Sides(U.N.)
 FBxxA(1): xx=length(in)
 A - L15x15x1



GENERAL NOTES:
 RIGID FRAME DRAWING NOTES TEST

NBS NORTHERN BUILDING SYSTEMS
 Dalton, MA 413-684-9916

Shelburne Falls Trolley Museum
 Trolley Museum Building
 14 Depot Street
 Shelburne Falls, MA 01370

RIGID FRAME ELEVATION
 DESIGN: zrm DRAFT: ZRM CHECK:
 DATE: 10/29/13 SHEET E-6 OF 10
 JOB NUMBER: 2131001